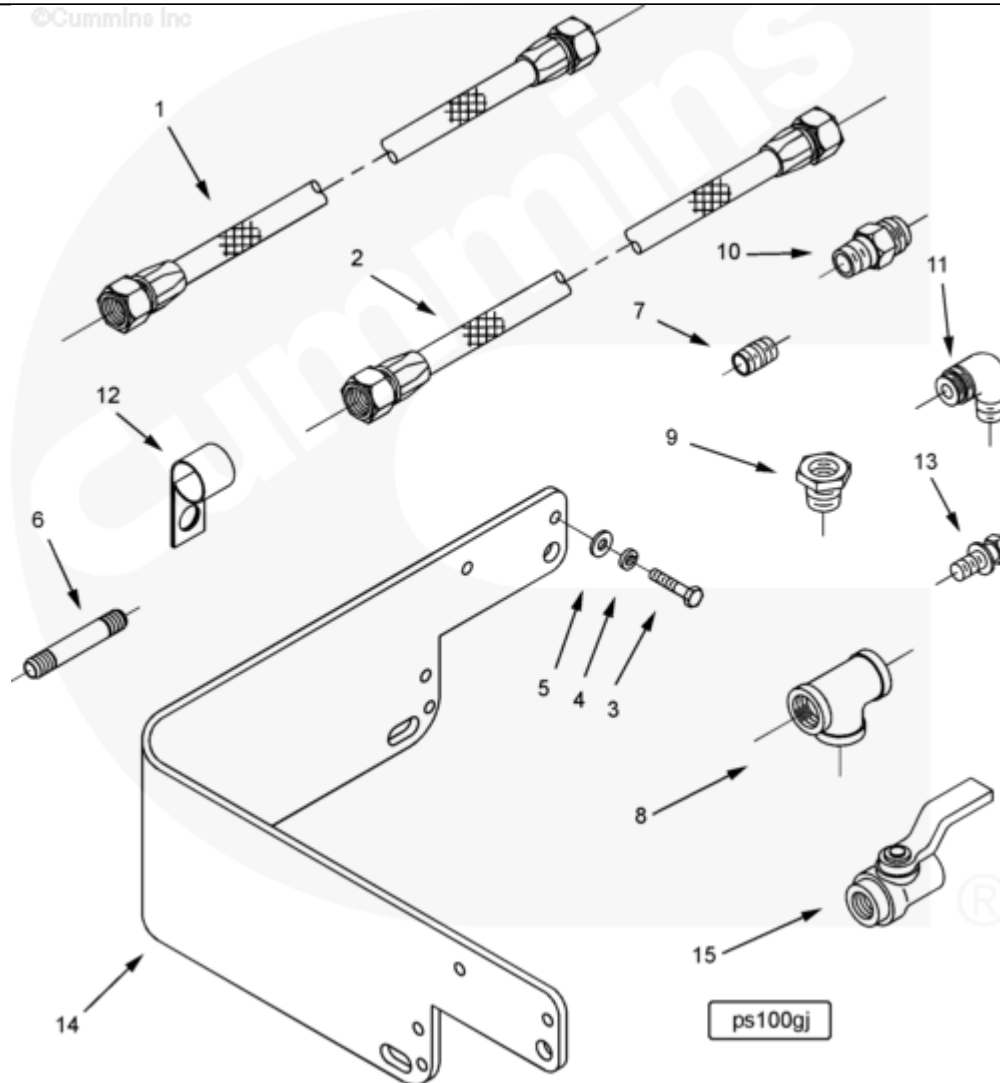




## Parts Catalog - Option Detail

Electronic Parts Catalog - Option Detail				
Option	Group	Graphic	Film Card	Date
PS1017-04	07.08	ps100gj	FF	06-OCT-00
<b>Engines</b>	G855, G855 CM558, GTA855 CM558 (CM2358) G101, N14 CELECT, N14 CELECT PLUS, N14 MECHANICAL, NH/NT 855, QSM11 CM876 M101, QSM11 CM876 M102M, QSN14 CM876 N103, QSN14 CM876 N105, QSNT14 CM876 N102			



[SMALL](#) | [MEDIUM](#) | [LARGE](#)

Cart	Ref No	Part Number	Part Description	Required	Remarks
<input type="button" value="View My Cart"/>					
		PS1017-04	Scavenge Pump		<a href="#">Rotary oil sump pump mounted...(More)</a>
					on starboard side for use

					with marine gear.
					Plumbed to both oil pan and
					marine gear sump.
<input type="checkbox"/>	1	<a href="#">AM10026 SS</a>	Flexible Hose	1	
<input type="checkbox"/>	2	<a href="#">AM10034 SS</a>	Flexible Hose	1	
<input type="checkbox"/>	3	<a href="#">S 105 C</a>	Hexagon Head Cap Screw	3	1/4 - 20 x 1 1/4 in.
<input type="checkbox"/>	4	<a href="#">S 600</a>	Lock Washer	3	1/4 in.
<input type="checkbox"/>	5	<a href="#">S 631</a>	Plain Washer	3	1/4 inch
<input type="checkbox"/>	6	<a href="#">S 903 C</a>	Plain Pipe Nipple	1	
<input type="checkbox"/>	7	<a href="#">S 920</a>	Plain Pipe Nipple	2	
<input type="checkbox"/>	8	<a href="#">S 960</a>	Female Pipe Tee	1	
<input type="checkbox"/>	9	<a href="#">S 982</a>	Reducing Pipe Bushing	1	
<input type="checkbox"/>	10	<a href="#">43764</a>	Male Connector	1	
<input type="checkbox"/>	11	<a href="#">100501</a>	Male Adapter Elbow	3	
<input type="checkbox"/>		<a href="#">123822</a>	Hand Pump	1	
<input type="checkbox"/>	12	<a href="#">204263</a>	Clip	1	
<input type="checkbox"/>	13	<a href="#">3015282</a>	Captive Washer Cap Screw	2	7/16 - 14 X 1 1/8 Inch.
<input type="checkbox"/>	14	<a href="#">3062419</a>	Hand Pump Bracket	1	
<input type="checkbox"/>	15	<a href="#">3200802</a>	Shut-Off Valve	2	
<input type="checkbox"/>		<a href="#">67946</a>	Plain Washer	1	1 1/32 in.
<input type="checkbox"/>		<a href="#">123824</a>	Threaded Plug	1	1 - 18 UNS.